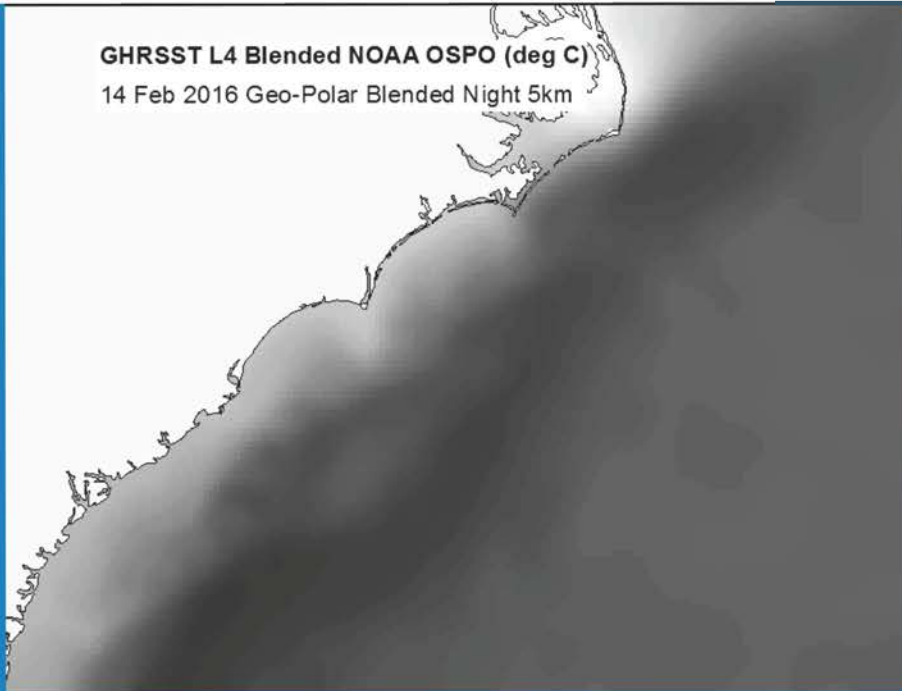


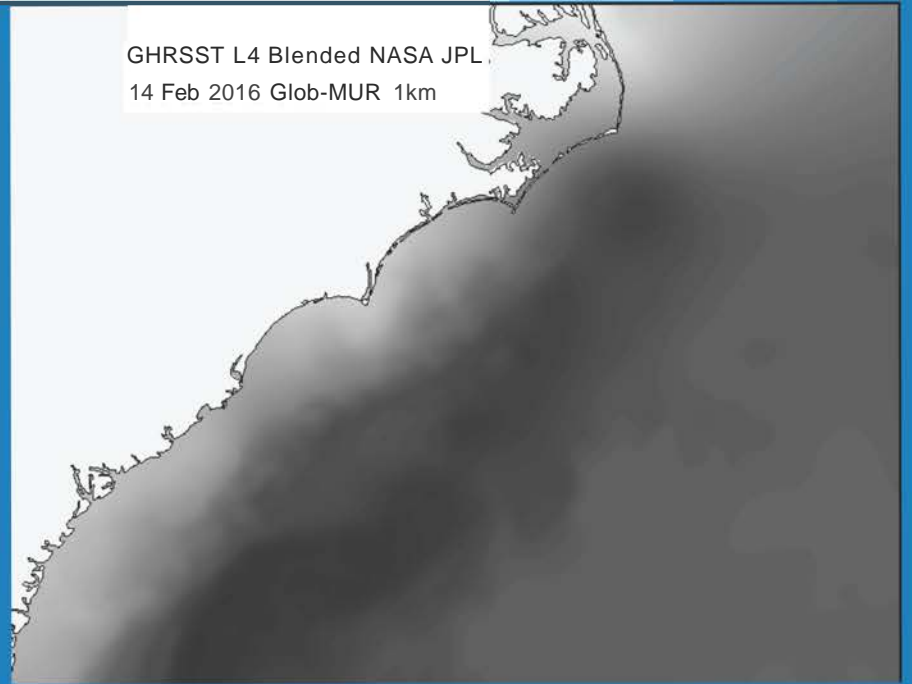
**SE USA
Feb. 14,
2016**



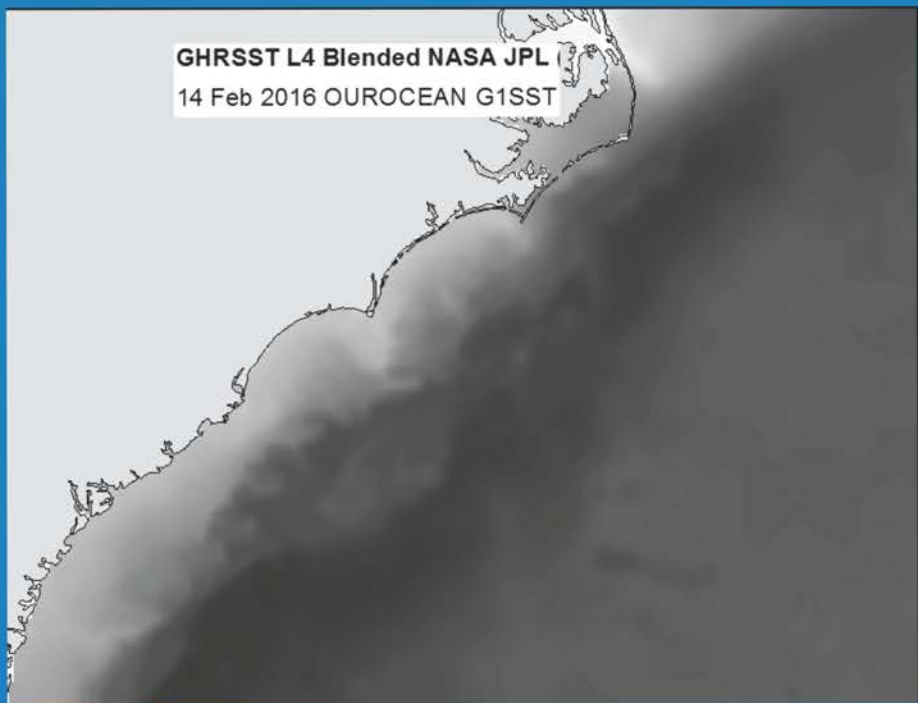
GHRSSST L4 Blended NOAA OSPO (deg C)
14 Feb 2016 Geo-Polar Blended Night 5km



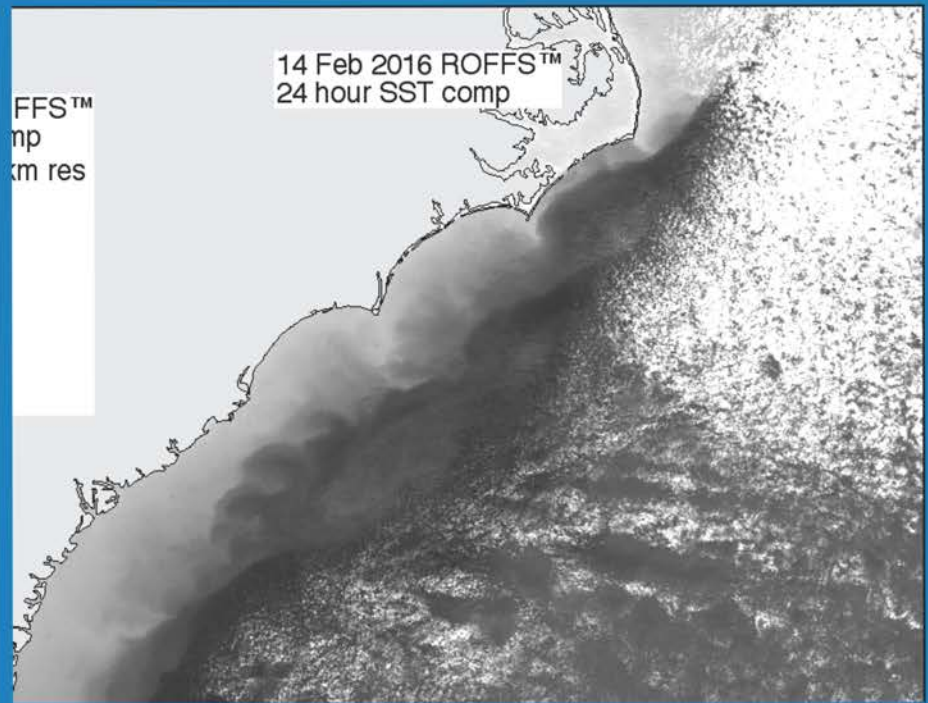
GHRSSST L4 Blended NASA JPL
14 Feb 2016 Glob-MUR 1km



GHRSSST L4 Blended NASA JPL
14 Feb 2016 OROCEAN G1SST

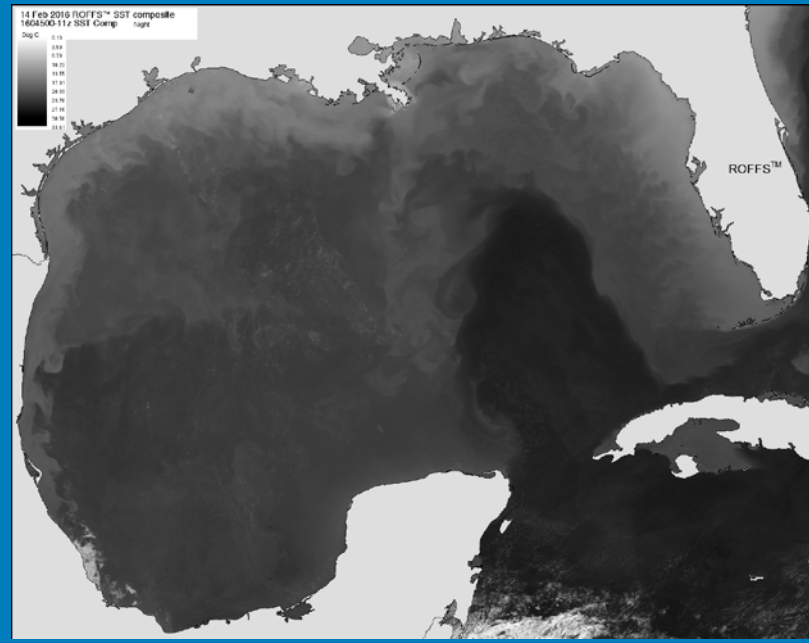
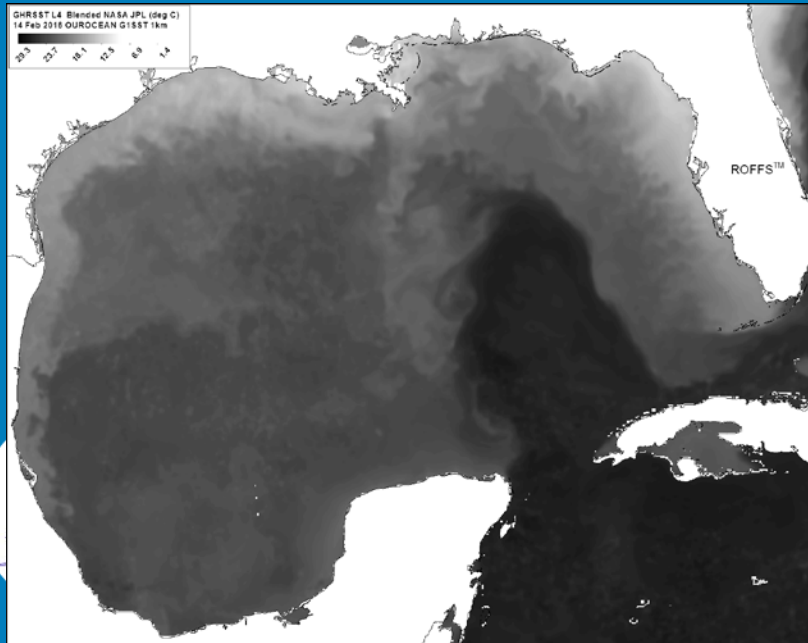
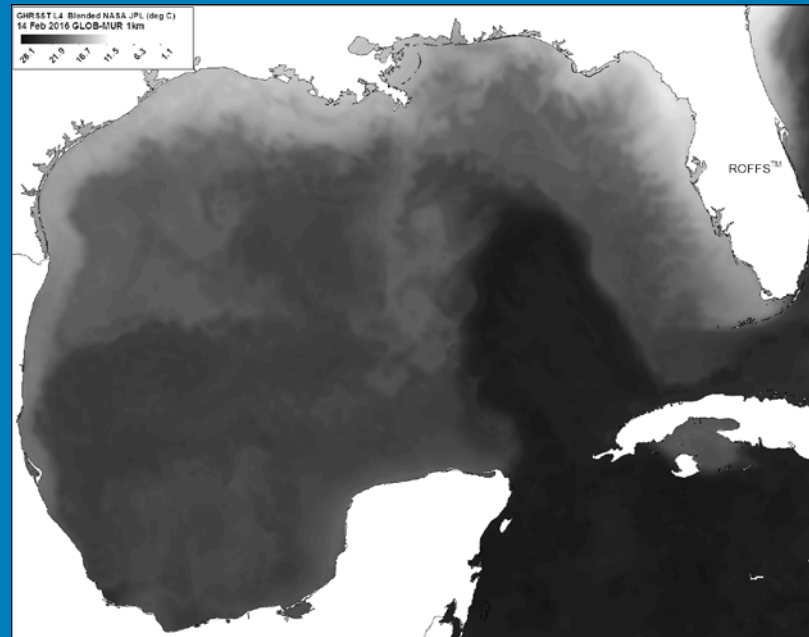
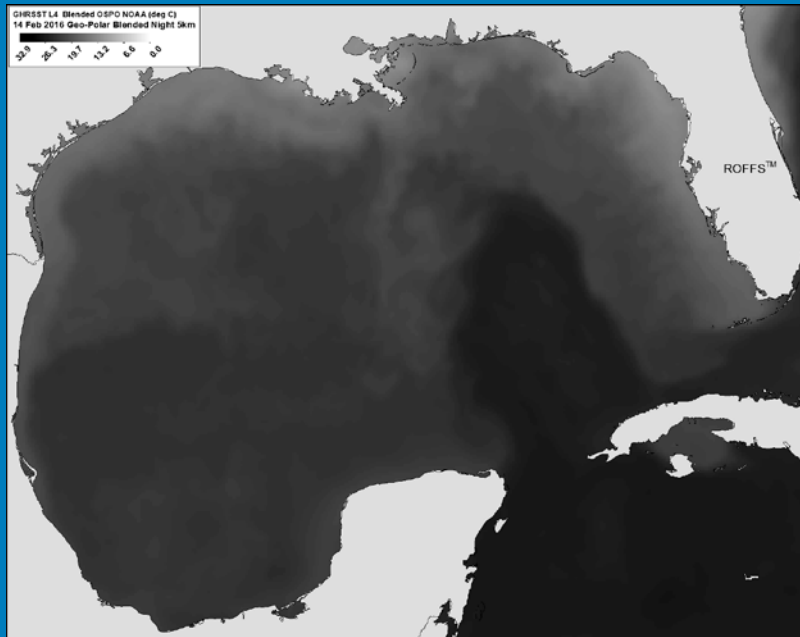


14 Feb 2016 ROFFS™
24 hour SST comp

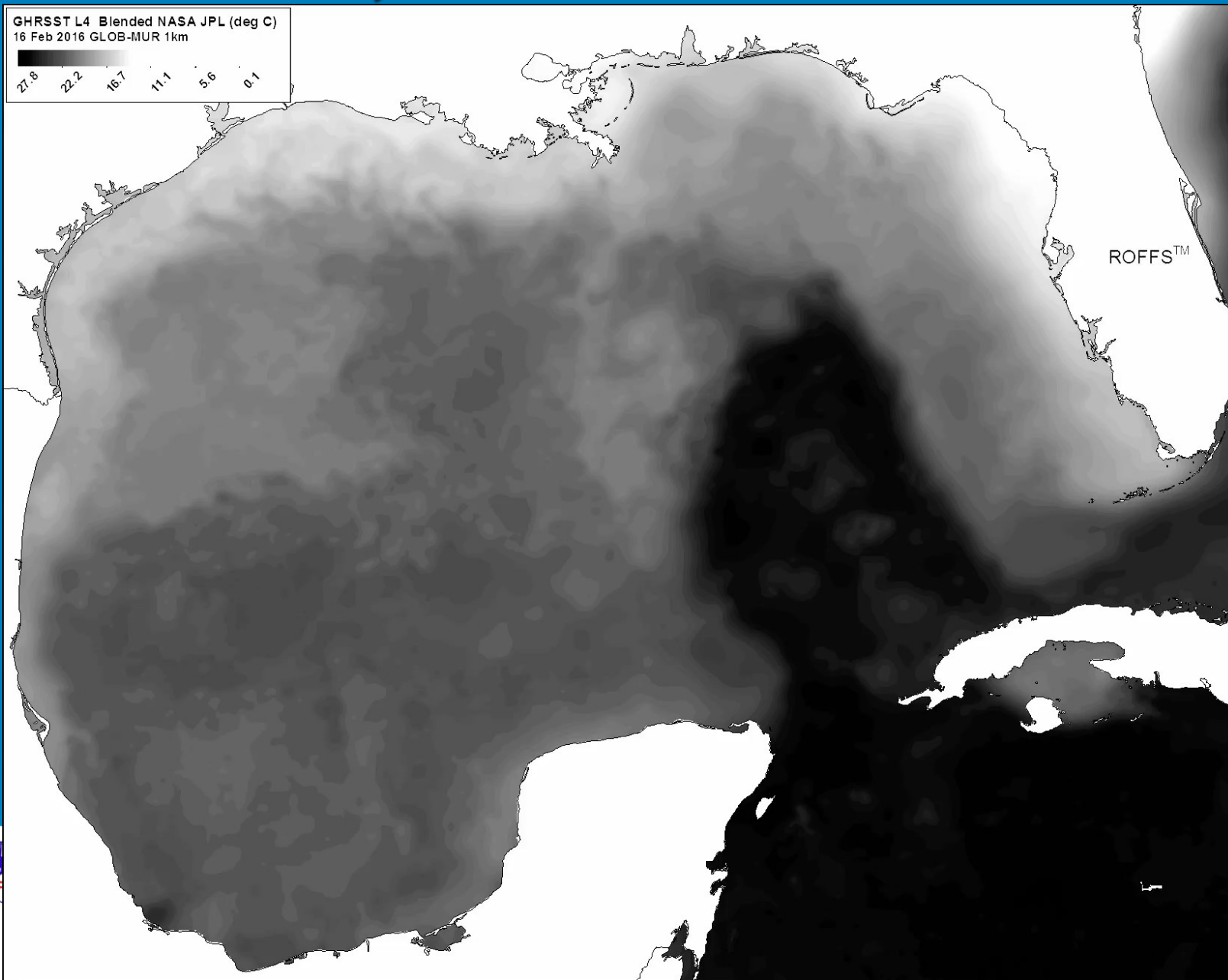


ROFFS™
1km res

Gulf of Mexico Feb. 14, 2016



Feb. 16, 2016 Movie Enhanced



Why are their Differences Clarity-Definition of Features?

- How the composite is made.
- Global versus regional algorithms.
- Un-renavigated vs. custom remapping.
- Filtering.
- Masking clouds.
- Addition of microwave when apparently cloud free.



12 hour versus 24 hour composites

Bottom Line

Yes the present data products are
Very Good.

But research continues

