

Process and Options for European Eel Conservation

Professor Chris Wold
Lewis & Clark Law School



Multiple Threats

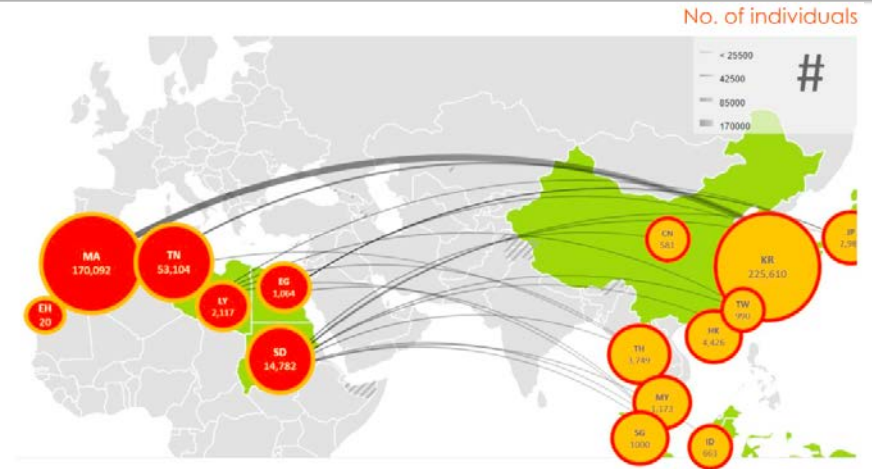


Figure 21

North African exporters and Asian importers of live species reported as number of individuals



Pollution

Disease

International Efforts



Official Journal of the European Union

COUNCIL REGULATION (EC) No 1100/2007

of 18 September 2007

establishing measures for the recovery of the stock of European eel



Convention on the Conservation of Migratory Species of Wild Animals

Secretariat provided by the United Nations Environment Programme



First Range States Workshop on the European Eel

Galway, Ireland, 13 – 14 October 2016



International Efforts Continue



CMS

Convention on the Conservation of Migratory Species of Wild Animals

About

Documents

Activities

Species

Publications

CMS instruments

[Home](#) / [2nd Meeting of Range States for the European Eel](#)

2nd Meeting of Range States for the European Eel



Slipping through the Cracks



General Fisheries Commission
for the Mediterranean
Commission générale des pêches
pour la Méditerranée

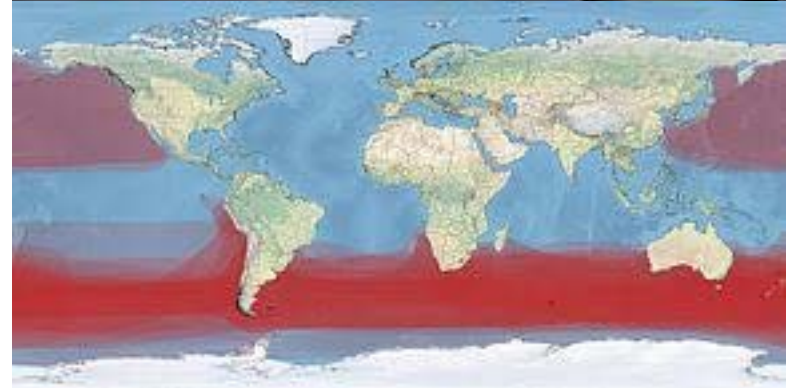


NAFO
Northwest Atlantic
Fisheries Organization

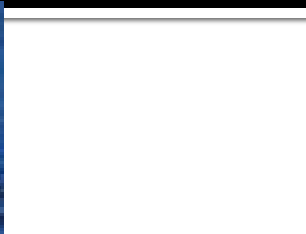


OCEANS & LAW OF THE SEA
UNITED NATIONS

Slipping through the Cracks: Range



Slipping through the Cracks: Multiple Threats



CMS

Range

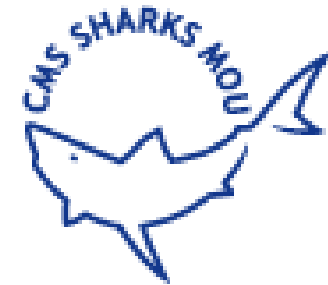
- High Seas
- Near Shore/EEZ
- Freshwater



Threats

- International Trade
- Domestic Trade
- Take
- Barriers to Migration
- Habitat Loss
- Pollution
- Disease

Key Issues: Binding or Non-binding



RAPTORS
MOU



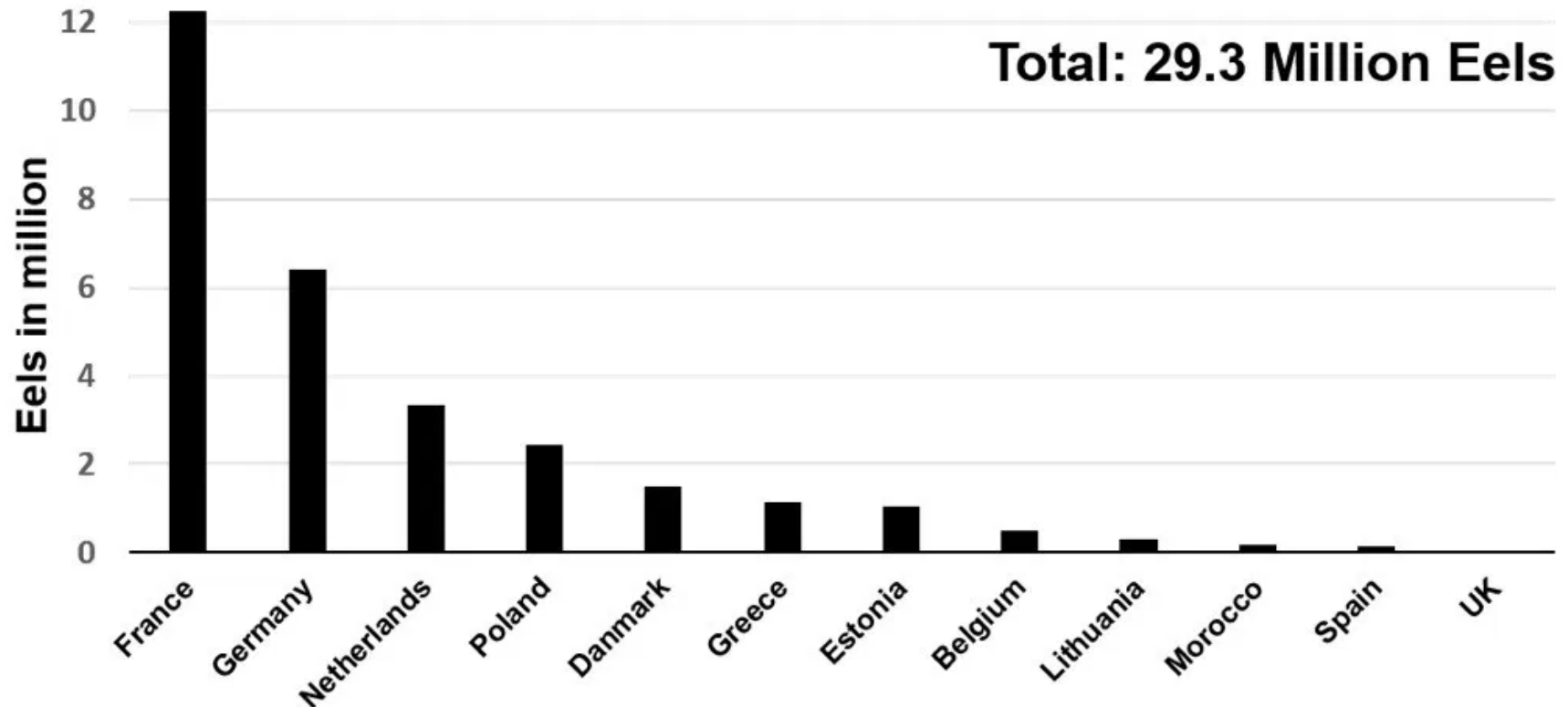
IOSEA

Key Issues: Take



Key Issues: Restocking

Eel restocking across Europe in 2016 (until 21 May)



Additional restockings are scheduled for dates after 21 May; e.g. Sweden and Finland are aiming to restock 2.9 million eels; Germany and the Netherlands aim to restock farm-sourced eels later in the season.

Key Issues: Trade

Mass in kilogrammes



Figure 22

North African exporters and Asian importers of live species reported as kilogrammes

Key Issues: Trade

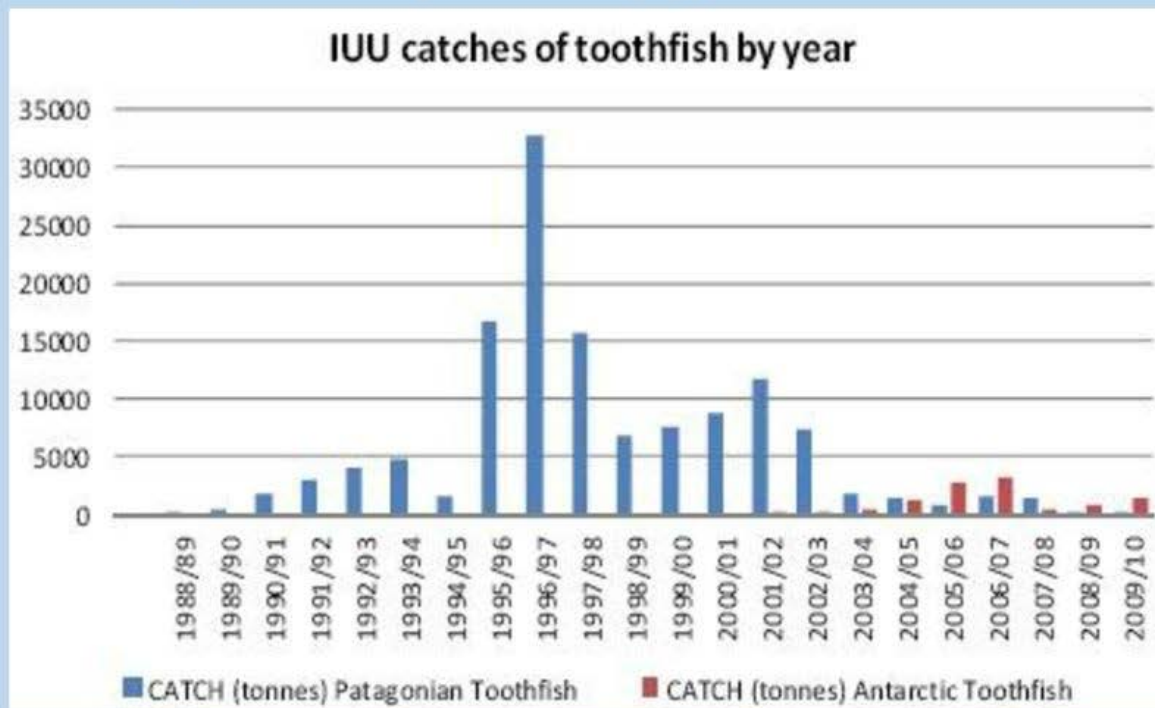


Catch Document Schemes

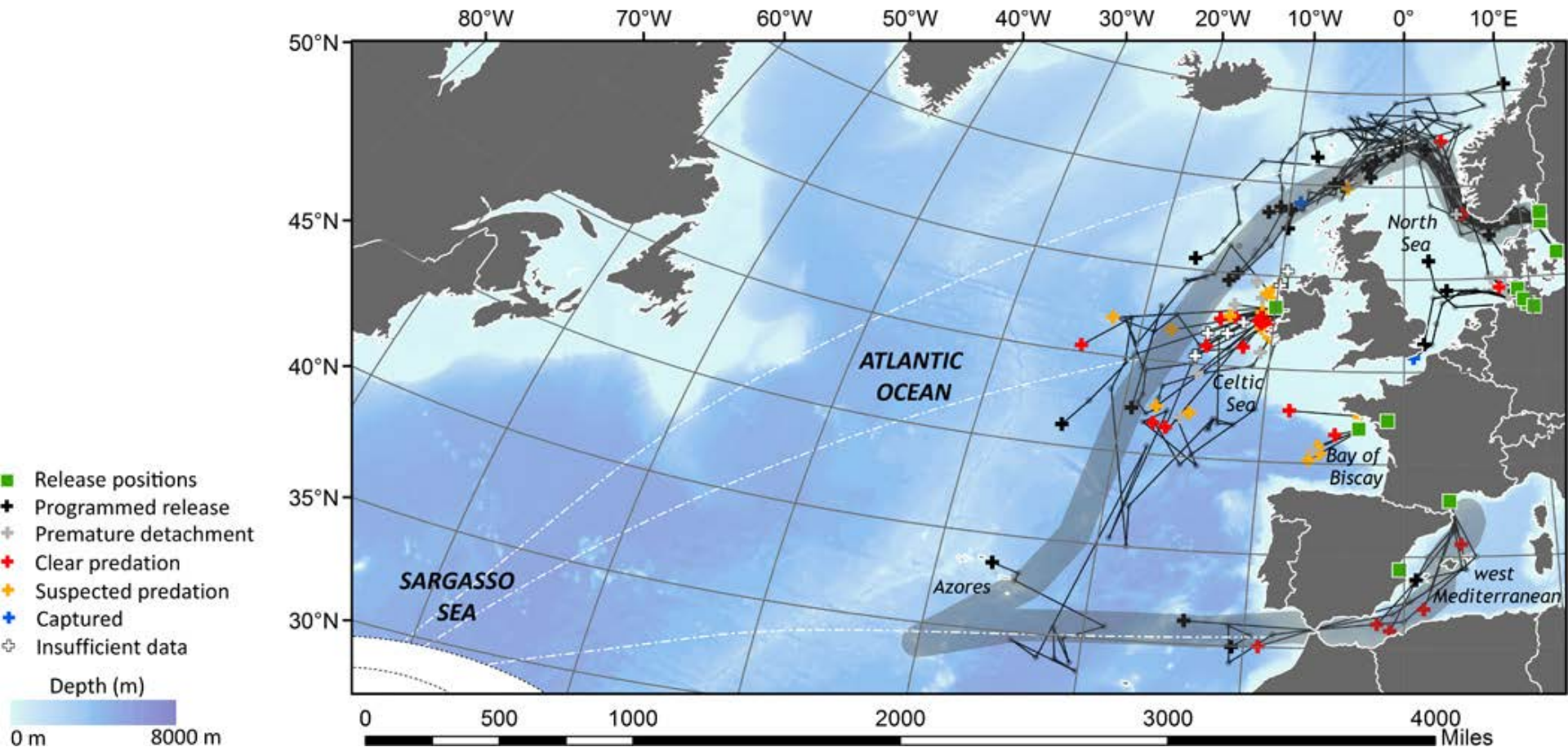
Illegal, unregulated, and unreported catches of toothfish

To address this problem, CCAMLR adopted a Catch Documentation Scheme (CDS) for toothfish species

All catches must be reported, tracked from point of landing through the trade cycle to verify legal status of the fish



Key Issues: Protecting Migratory and Spawning Habitat



Key Issues: Other Species

American eel migration routes from Sargasso Sea



SOURCE:
U.S. Fish and
Wildlife Service

THE PROVIDENCE
JOURNAL

Institutional Elements

- Advisory or Scientific Body
- Secretariat
- Financing





Chris Wold
wold@lclark.edu

